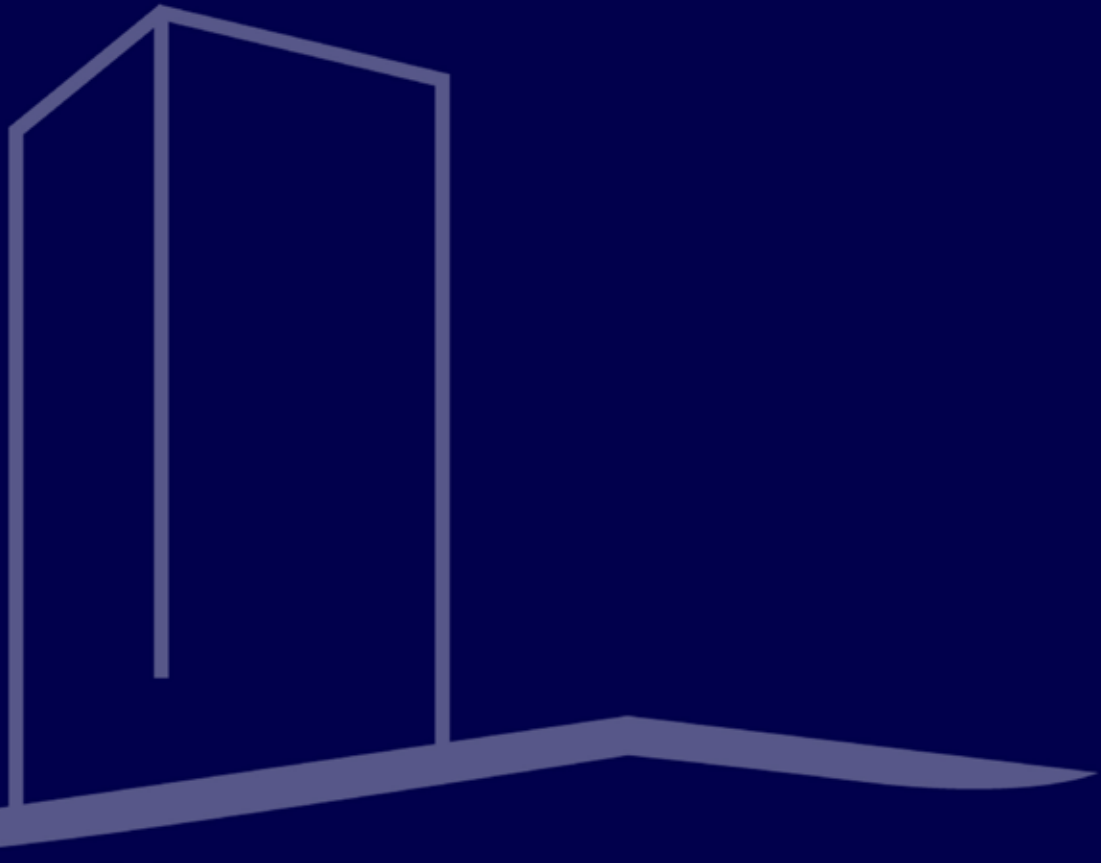




International Arbitration



Centre for international dispute resolutions in Milan

The new **Centre for international dispute resolutions in Milan**, Italy, was established to meet the increasingly felt need to hold arbitration meetings in a neutral venue, that is also efficiently organised and equipped with the specific experience required to meet the requirements of Arbitration Tribunals.

The new Centre for international dispute resolutions in Milan, managed by the **Swiss Chamber of Commerce in Italy (CCSI)**, is located in the prestigious Centro Svizzero in Piazza Cavour, a building owned by the Helvetic Confederation, that houses the main Swiss institutions active in Italy.

This is a definitely charming and interesting venue in a privileged location in the heart of the city, just across the Giardini di Porta Venezia park. It is easy to reach from the railway stations and airports and well served by public transport, just a few steps away from Milan's iconic venues: the Duomo, Via Montenapoleone, Brera, the Teatro alla Scala.

The new Centre for international dispute resolutions in Milan is the ideal location to host hearings: it offers an exhaustive service, from logistic support, equipped with state-of-the-art infrastructures and technical facilities, to highly qualified secretarial services; everything is characterised by high professional skills, efficiency, confidentiality and speed. The twenty-year-old expertise in administered arbitration of the Swiss Chamber of Commerce in Italy, that already offers its own Arbitration Regulations, is yet another guarantee of reliability and professionalism.



The city of Milan

Milan is Italy's economic-financial capital and an important European crossroad extending into the Mediterranean region. The main Italian city for services and the tertiary industry, finance and industrial operations, Milan is home to the Stock Exchange, one of the most important financial centres in Europe, and is acknowledged to be one of the world capitals of fashion and industrial design.

Thanks to its geographical location, ICT facilities and financial organisations, Milan is the main doorway for foreign direct investment into the country. Its province has nearly 3,000 non-Italian multinationals, mainly active in the service or high-technology industrial sectors, that employ over 320,000 people.



Milan is one of the main publishing, TV and university cities in Europe; indeed, it has 5 State Universities and 7 private ones, and boasts a Fair centre that has the largest exhibition area in Europe and will be hosting the EXPO 2015 World Exhibition.

A very important junction in the road, motorway and railway networks, Milan is served by as many as three airports within 50 km from the city, that handle about 30 million passengers and 600,000 tons of goods every year, which make it the main airport system in Italy.

Sala Meili

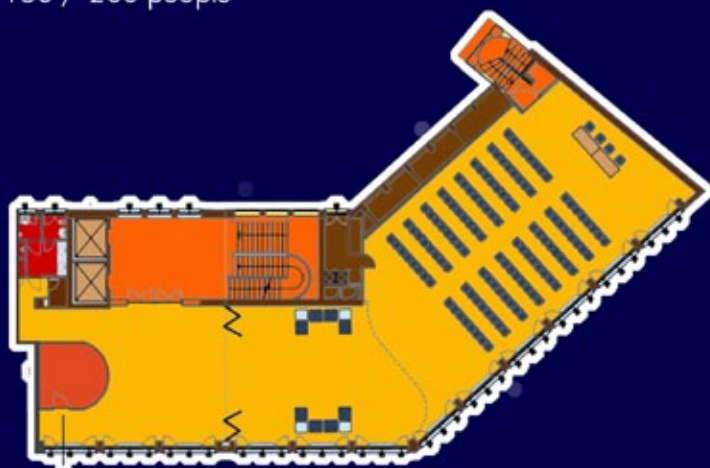
The **Sala Meili**, inspired to the 1950s rationalism, is a perfect match of rigour and atmosphere. Its cherry wood interiors soften the crisp, essential geometrical design; wide windows facing onto the park allow sunlight into the room and afford a charming, impressing view. State-of-the-art technology makes the Meili room a very functional and modern location.

TECHNICAL SPECIFICATIONS:

surface about 300 sqm
access door m. 0,80 x 2,05
wall windows side m. 23,00
room height m. 6,0
wall slanted side m. 14,50
windows height m. 5,00
back wall m. 11,00

SEATING:

150 / 200 people



Sala Terrazza

The **Sala Terrazza**, the new space for exclusive events, is located at the top floor of the Centro Svizzero and has an impressive private terrace overlooking the Giardini di Via Palestro park.

Reserved, welcoming, elegant, it is characterised by a glass dome that affords magnificent, unique natural lighting and by wide glass panes overlooking the park.

TECHNICAL SPECIFICATIONS:

surface 52 sqm

access door m. 1,2 x 2

wall windows side m. 12

room height m. 2,2/2,8

wall entrance side m. 7,5

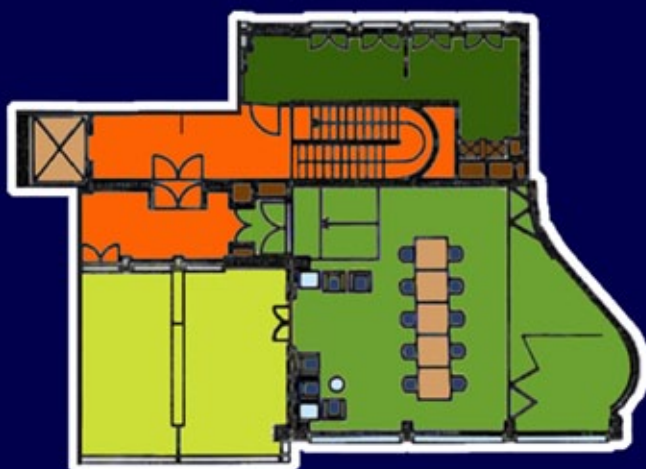
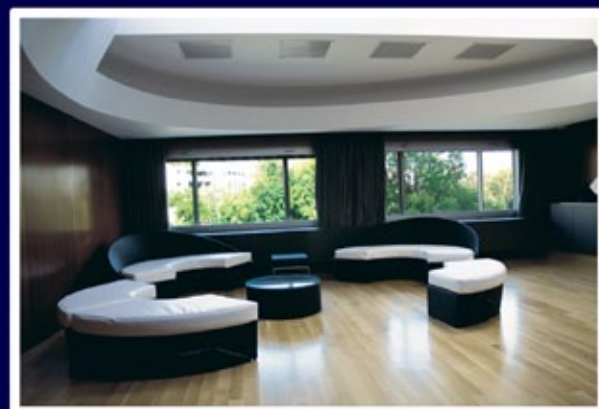
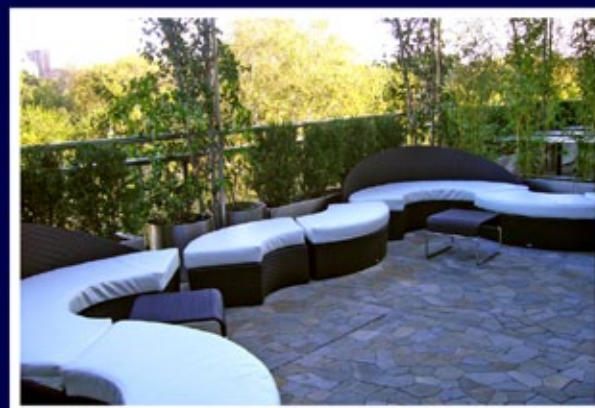
windows height m. 1,05

ROOF GARDEN:

superficie mq. 35

parete lato coperto m. 37

parete lato sala m. 5

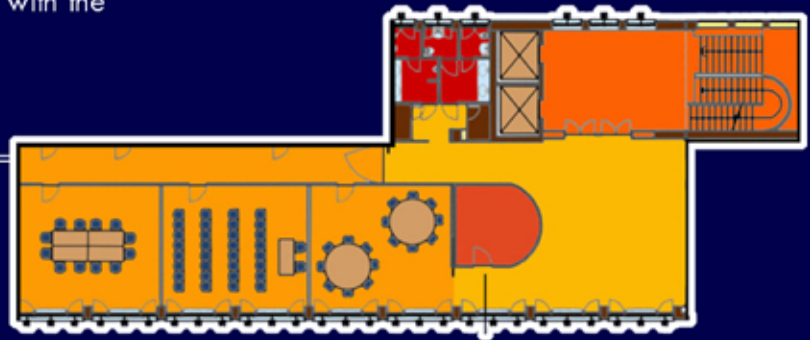


Modular rooms A - B - C

The **modular rooms A - B - C**, that can be used separately or as a single space, are particularly suitable for small groups meetings and are an excellent, articulated logistical arrangement for large events that require some service space. Equipped with the latest technology, they can host working sessions either on a stand-alone basis or in connection with the main room.

TECHNICAL SPECIFICATIONS:

surface about 37 sqm each individual room (2= 74 sqm; 3= 111 sqm)
access door m. 0,80 x 2,05
walls m. 7,1 x 5,2
room height m. 2,8
windows height m. 1,5



Meeting Facilities

The Swiss Chamber of Commerce in Italy also provides some spaces in its offices that are ideally suited for small groups meetings.



Fittings, equipment and services

Basic furniture and fittings

- Modular platform 60 centimetres high, maximal surface 32 square metres
- Black rectangular desks 180x80 centimetres, chromate table legs
- Black conference chairs
- Signboards
- Podium with relevant lighting

Basic Equipment

- Heating system / conditioning plant
- Audio/video circuit
- Microphones
- Radio microphones
- Clip radio microphone
- Conference system for six speakers
- Videotape recorders: S-VHS, U-MATIC,
- Cassette recorder
- Compact disc player
- TV stereo 34"
- Projection screen 180x180 centimetres
- Projection screen 5x5 metres
- Flipchart
- Overhead projector
- Wireless ADSL line
- Telephone line

Extra equipment

- Personal computer
- Video projector
- Video camera
- Special lights
- Monitor
- Betacam video tape recorder
- Simultaneous translation
- Videoconferencing

Extra services

- Hostesses
- Interpreters / Translators *
- Transcription services
- Catering for tea breaks, lunch and dinner
- Travel & Accommodation
- Technical assistance
- Photocopies
- Fax
- Attended garage
- Others

**Rates available upon request, depending on language required*

Price list

Rooms name	Square metres	Half day	Full day
		8.00-13.00 - 13.00-18.00	8.00 - 18.00
Meili Room	300	€ 1.300,00	€ 1.700,00
Room A	37	€ 450,00	€ 450,00
Room B	37	€ 450,00	€ 450,00
Room C	37	€ 450,00	€ 450,00
Sala Consiglio	45	€ 290,00	€ 290,00
Sale Riunioni	18	€ 160,00	€ 160,00

The above amounts have to be intended for the rooms' use from Monday to Wednesday.

For events lasting after the mentioned hours, it will be calculated an additional charge of Euro 90,00+IVA per hour or fraction of hour.

On Saturday, Sundays and public holidays and after 00.00 a.m. the mentioned amounts will be surcharged of the 40%.

Members of the Swiss Chamber of Commerce in Italy benefit by a 15% reduction on the rooms rent rate.

Rooms can be definitively booked by advancing the 40% of the rent rate of the required rooms. All rates are after 20% tax.

Terms of payment: 30 days after the end of the month of the invoice date. Eventual delays involves a 5% arrears rate. Payments can be made by cheque to Promosvizzera S.r.l. or by money transfer to IBAN IT37 V 05584 01610 000000013452 BIC BPMMIITM1010

Centre for international dispute resolutions in Milan

c/o Swiss Chamber of Commerce in Italy
Via Palestro, 2 - 20121 Milano
tel. +39 02 7632031- fax +39 02 781084
arbitration@ccsi.it - www.ccsi.it

How to reach it:

Milan Central Train Station: Km. 1,5

Milan Linate International Airport: Km. 7

Tram and bus: Line 1, 2, 61, 94 (P.zza Cavour)

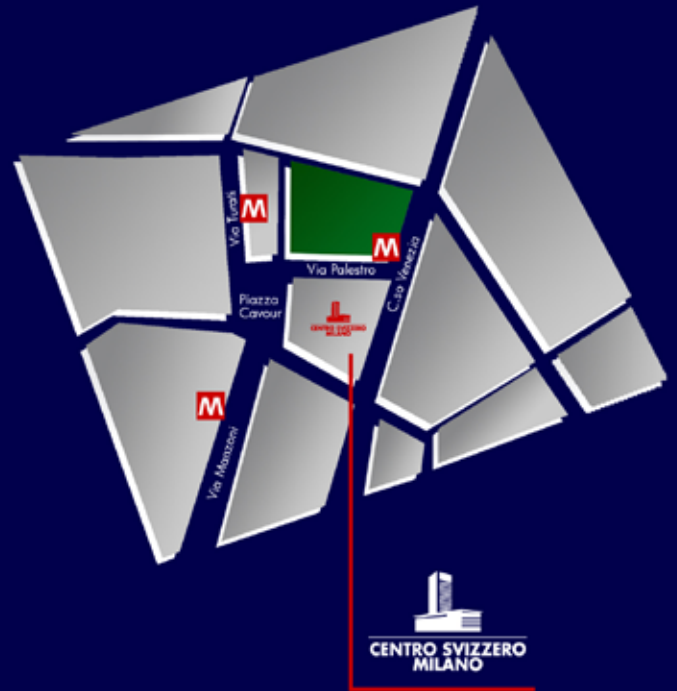
Subway: Line 1 (Palestro), Line 3 (Turati)

Piazza Duomo: Km. 1,5

Taxi parking: P.zza Cavour

Car Parking: Garage Suisse (Via del Vecchio Politecnico),

P.zza Morandi, Via Palestro, Via Manin



Swiss Chamber of Commerce in Italy

Via Palestro, 2 - 20121 Milano

tel. +39 02 763201- fax +39 02 781084

info@ccsi.it - www.ccsi.it